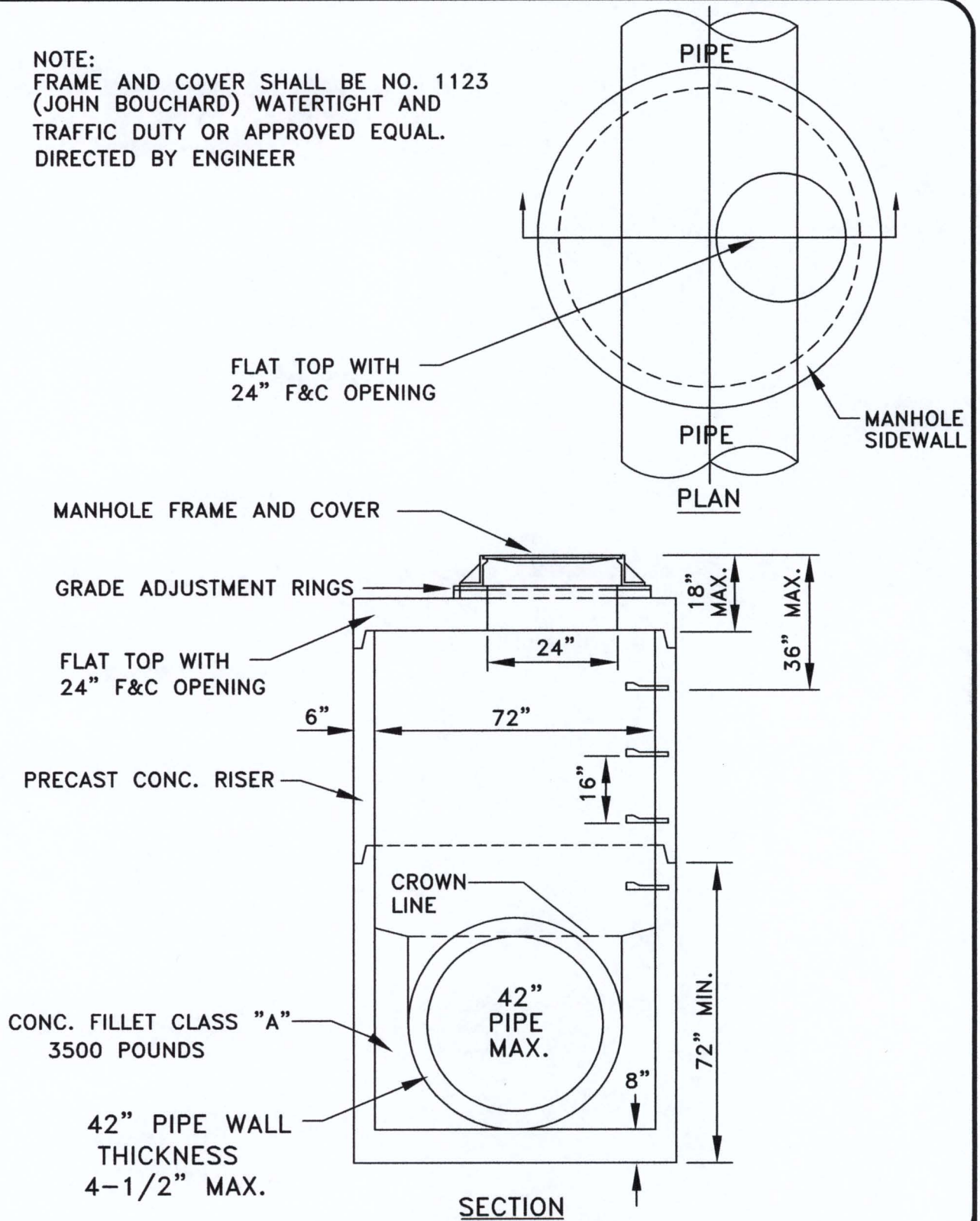


NOTE:
 FRAME AND COVER SHALL BE NO. 1123
 (JOHN BOUCHARD) WATERTIGHT AND
 TRAFFIC DUTY OR APPROVED EQUAL.
 DIRECTED BY ENGINEER



METRO WATER SERVICES

PRECAST 72" CONCRETE
 MANHOLE DETAIL

NOT TO SCALE | DATE: 02/22/08

DWG. NO. SDET003B



Hal Battthrop
 LICENSED COLLECTION OPERATOR

S. M. Little
 DIRECTOR OF WATER AND SEWERAGE SERVICES